

1. Remove and machine mortise bottom of door 1 3/4" x 9/16" (FIG. 1).
2. Measure door width.
3. Machine cut unit less 1/32" for operating clearance if mounting plates are not rebated, less 1/8" if rebated. Shorten inner section of seal 1/32" more each end for free travel up and down.
4. Fit seal into groove with adjustable block on hinged side of door and secure mounting plate with screw provided, making sure tongue is firmly supporting seal housing (FIG. 2).
5. Fit second mounting plate on latch side (FIG. 3).
6. Re-hang door and position striker button where adjustable block meets door jamb. Close door and observe seal travel.
7. Adjust seal travel to make full contact with sill. To adjust seal travel pull out adjustable block to clear aluminium housing. Firmly holding metal threaded rod, turn adjustable block clockwise to reduce seal travel. NB To compress seal is not necessary since this will increase seal wear.
8. The seal is factory set to seal a door bottom that is parallel with the floor. To adjust, screw level adjustment screw located on latch side of door.

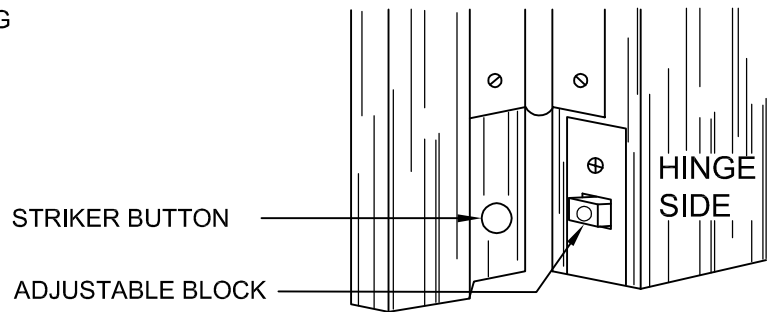
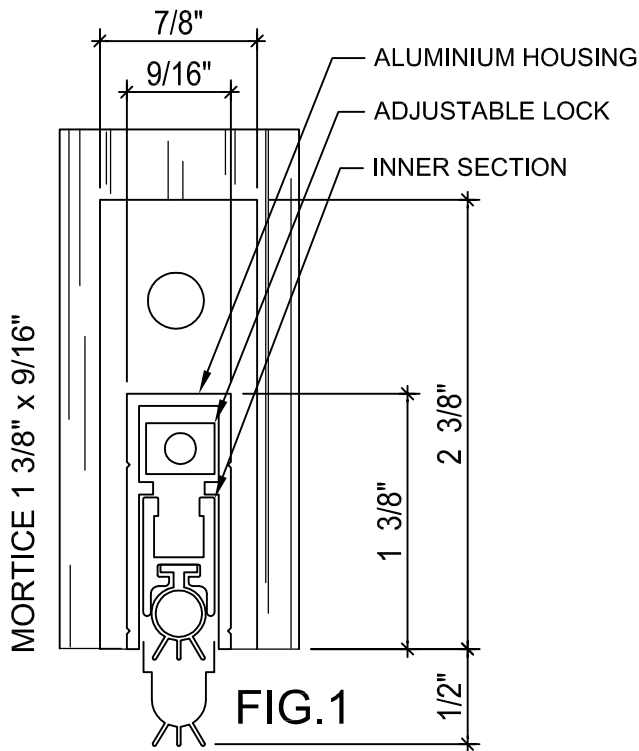


FIG.2

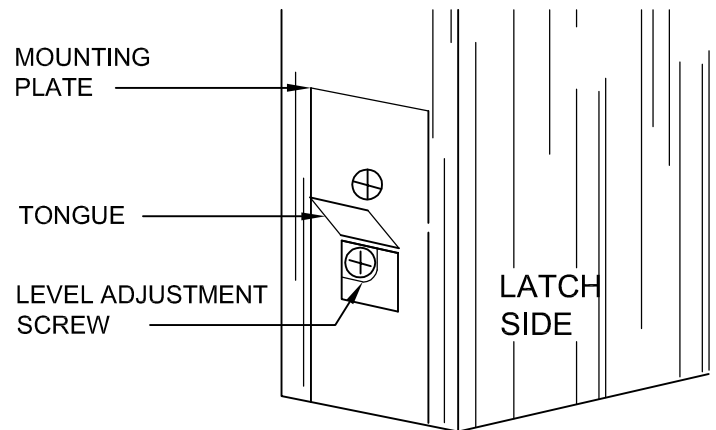


FIG.3

To secure RP8 seals at rebate side of door, drill RP8 aluminium housing 3/8"-5/8" in from exposed timber edge, use 1/2" x 6 gauge screw provided and fix. The moving of the RP8 will need to be lifted to make fixing possible.



## INSTALLATION OF RP8 DOOR SEAL

M.J.N. McNAUGHTON LTD

PO Box 27 061, Mt. Roskill, New Zealand  
Email: mjmnaughton@xtra.co.nz

T: +64.9.620.9059  
F: +64.9.620.7585

RP8  
DOOR SEAL

Scale: N.T.S.

Date: 10/26/05

Page: DH08A